

KSB Ref:
Project:
Tag Nr:

Performance Curve

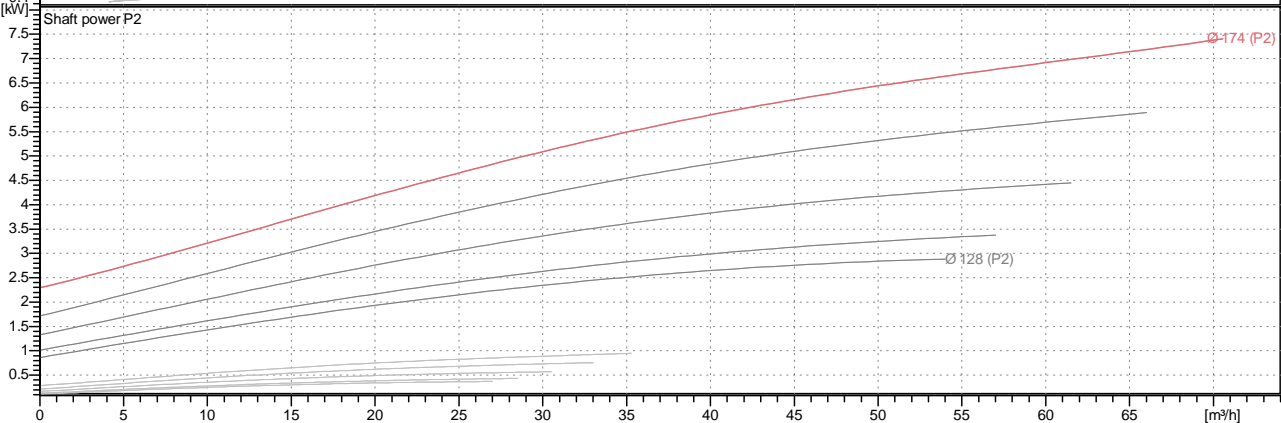
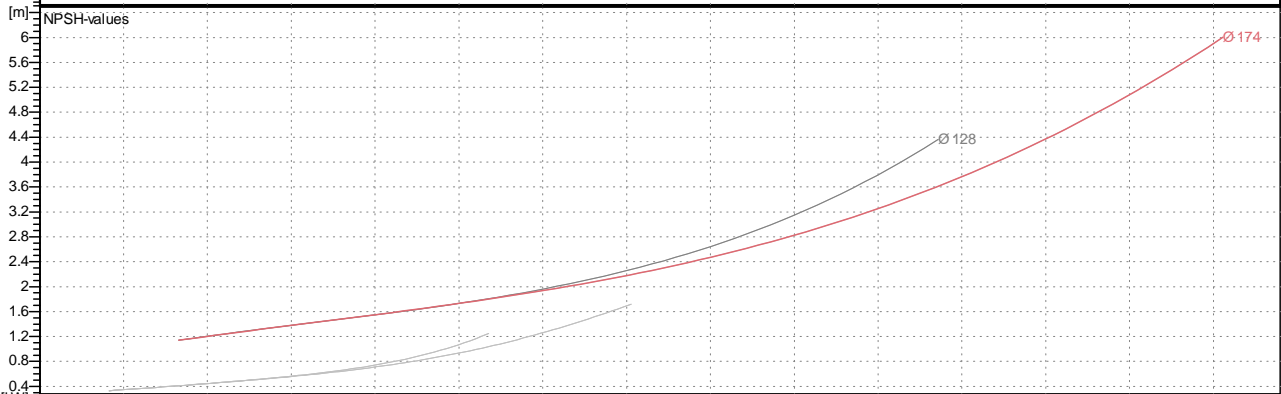
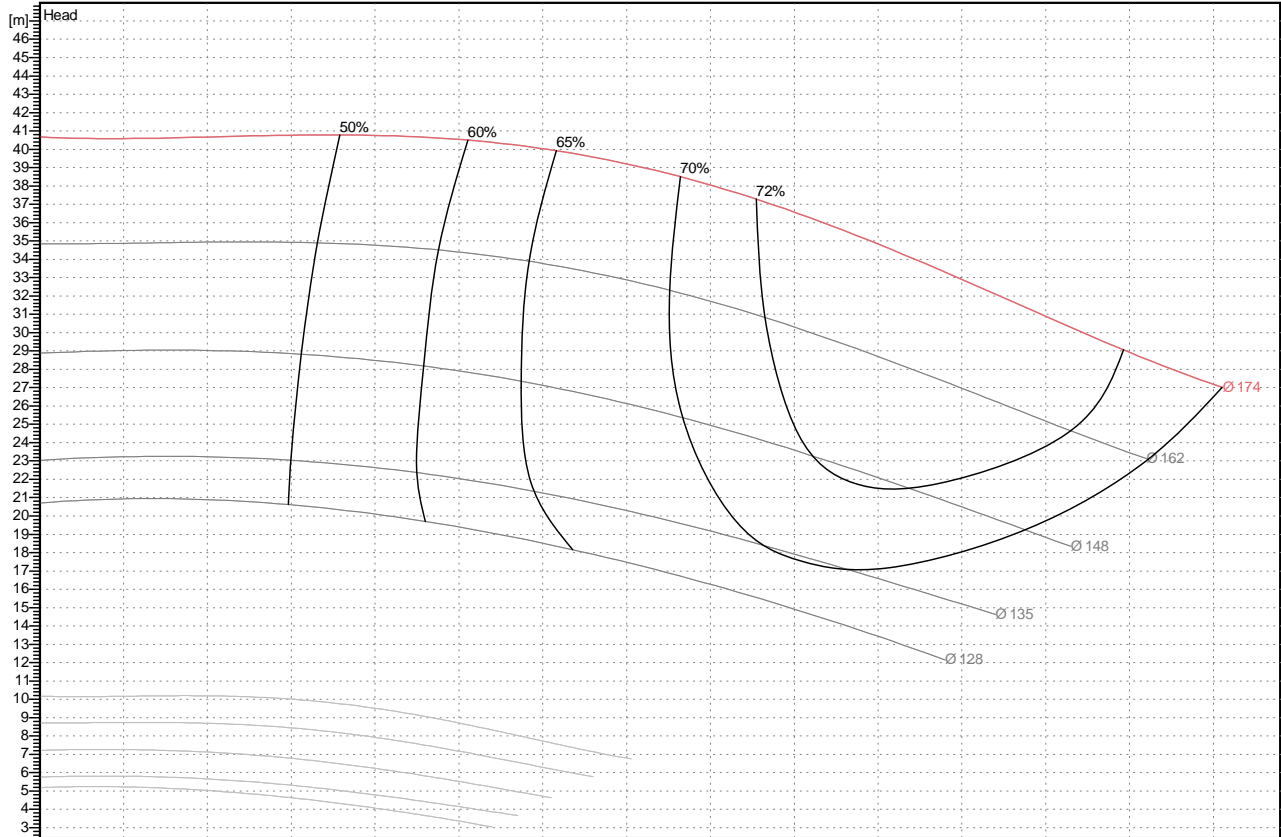
Etabloc 065-040-160 GG AI 10



Flow:
Head:
NPSHr:
Efficiency:

Imp Dia: 174 mm
Operating Speed: 2900 1/min
Power Abs: 7.5 kW
Motor Size: 7.5 kW

Pumped Fluid: Water, pure
Operating temp: 20
Density: 1.00 kg/dm³
Stages: 1



Impeller Outlet Width 13 mm

K1311.452/26/1