

KSB Ref:  
Project:  
Tag Nr:

# Performance Curve

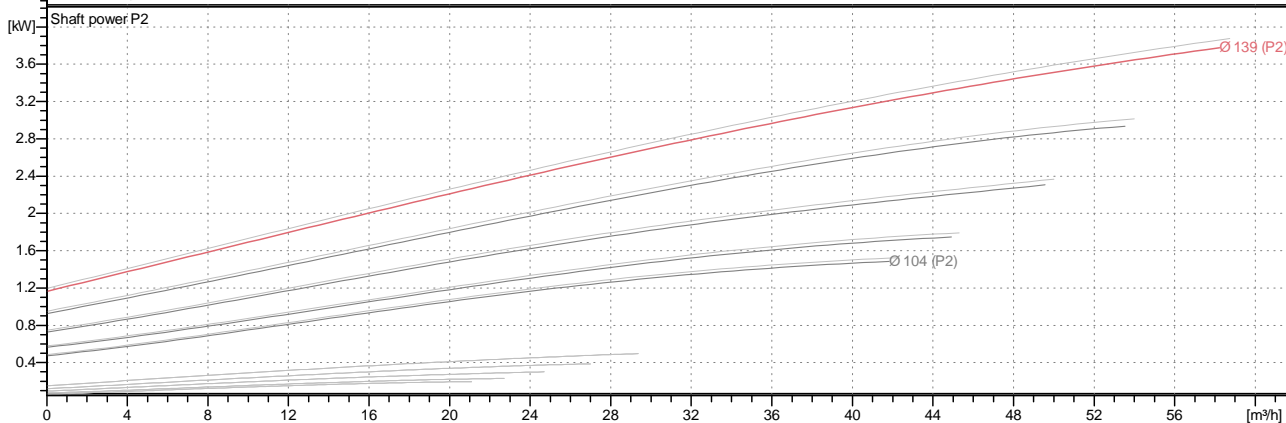
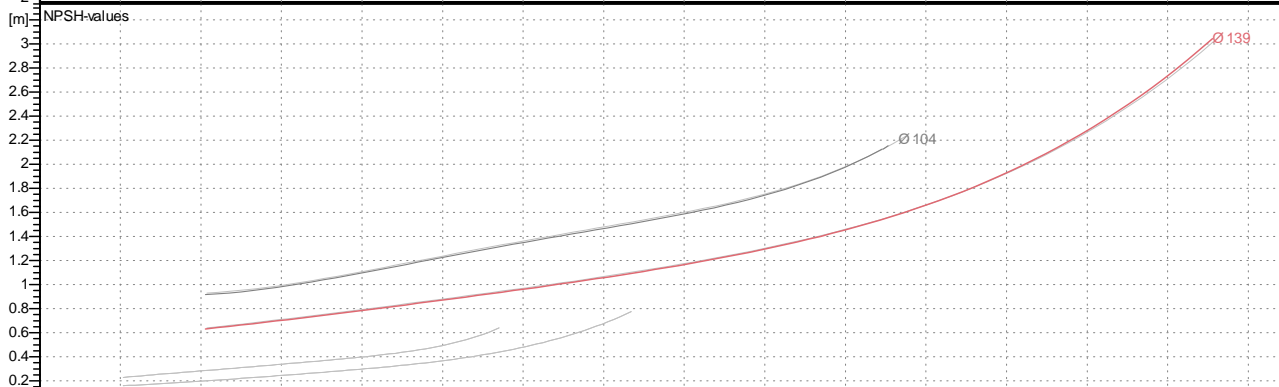
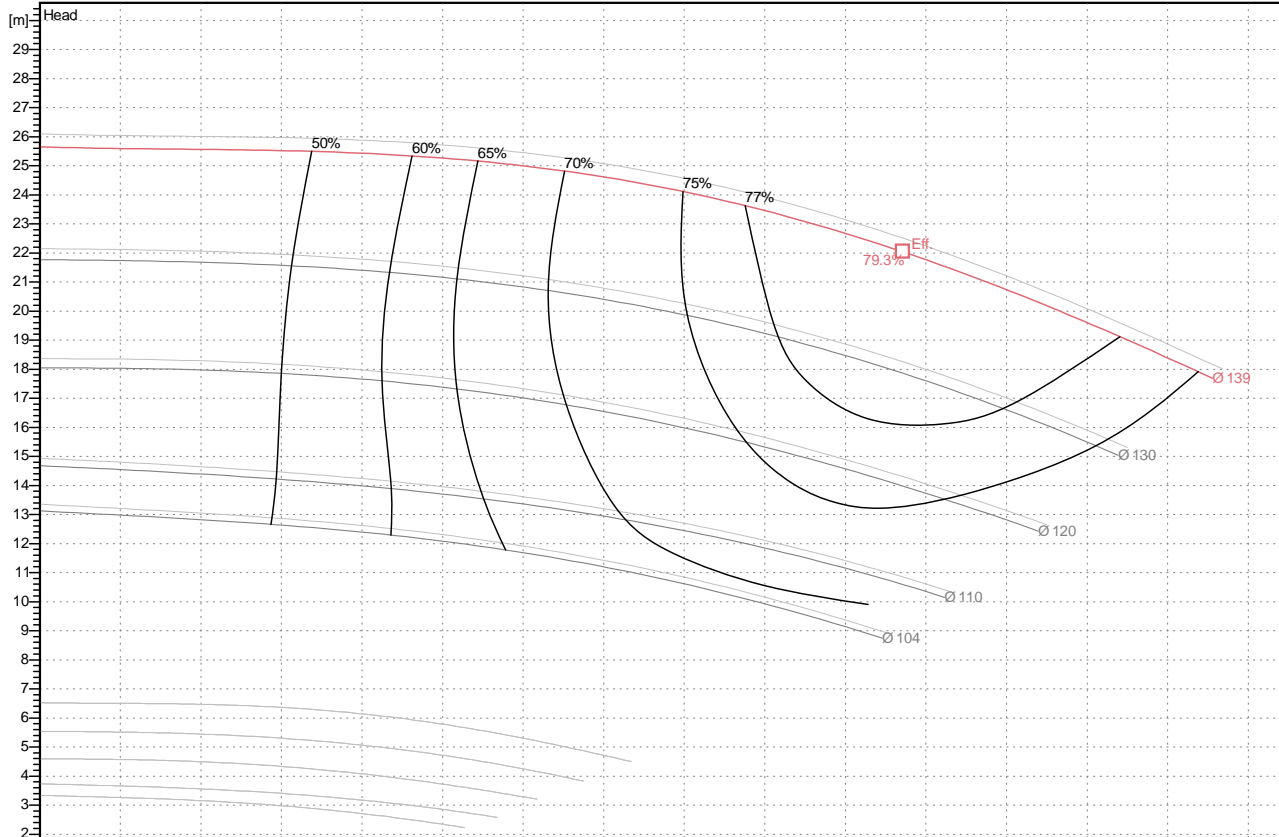
Etabloc 065-040-125 GG AI 10



Flow:  
Head:  
NPSHr:  
Efficiency:

Imp Dia: 139 mm  
Operating Speed: 2875 1/min  
Power Abs: 4 kW  
Motor Size: 4 kW

Pumped Fluid: Water, pure  
Operating temp: 20  
Density: 1.00 kg/dm<sup>3</sup>  
Stages: 1



Impeller Outlet Width 4 mm

K1311.452/25/1