



Technical data

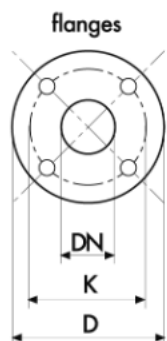
Date	6/22/2022
Offer N.	---
Pump Type	CM32-200C

Client	NTD Pumps Co.,LTD	Reference	---
--------	-------------------	-----------	-----

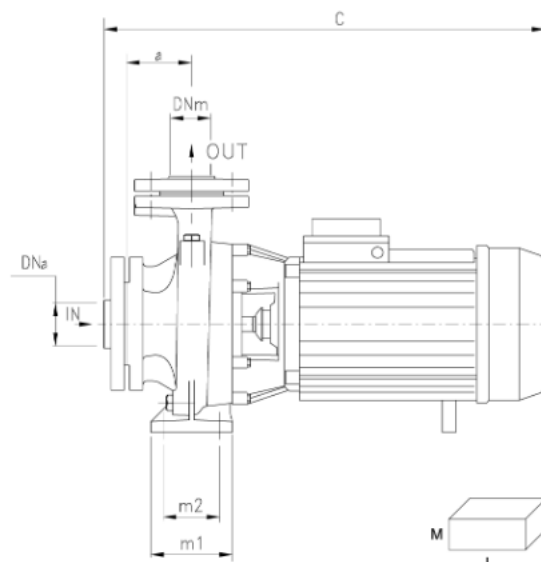
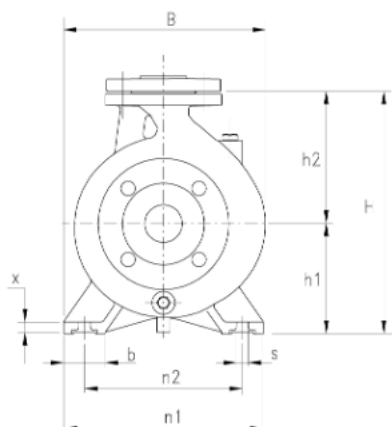
Pump data		
Pump body	Cast iron GJL-250	Monobloc horizontal centrifugal pumps, constructed to EN 733 standards; widely used in water supplies, pressurisation and fire-fighting systems, cooling, heating, irrigation, industrial and agricultural applications. The pumps are equipped with cast iron impeller in standard configuration; on request, they are available with bronze or AISI 316 stainless steel impeller. Pumps are supplied with counter-flange.
Motor bracket	Cast iron GJL-250	
Impeller	Cast iron GJL-250 On request bronze or stainless steel AISI 316	
Mechanical seal	Ceramic-Graphite	
Motor shaft	Stainless steel AISI 304 EN X5CrNi18-10	
Liquid temperature	-10°C +90°C	
Operating pressure	Max 10 bar	

P2		P1 (kW)		A		Q (m ³ /h - l/min)									
(HP)	(kW)	1~	3~	1x230V	3x400V	0	6	7.5	9	12	15	18	21	24	27
						0	100	125	150	200	250	300	350	400	450
						H (m)									
5,5	4	---	4,9	---	8,9	40.2	40.2789	40.1175	39.8391	38.9121	37.6982	36.0938	34.1928	31.5922	28.7367

Technical Sheet



DIMENSIONS (mm)				
DN	D	K	n°	Ø
32	140	100	4	18
40	150	110	4	18
50	165	125	4	18
65	185	145	4	18
80	200	160	8	18
100	220	180	8	18
125	250	210	8	18



DNA	DNM	DIMENSIONS (mm)																Kg
		a	h1	h2	m1	m2	n1	n2	b	x	s	C	B	H	I	L	M	
50	32	80	160	180	100	70	240	190	50	12	14	540	268	340	602	263	395	56,5

Notes

The information may be subject to change without notice. It is always advisable to contact our commercial department in order to get further information about the products, their technical specifications and warranty conditions. The Company is expressly relieved of any liability for the purchasing of a product not in line with the customer's needs, if not consulted beforehand for a specific consultancy.



Working Curves

Pump type: CM32-200C

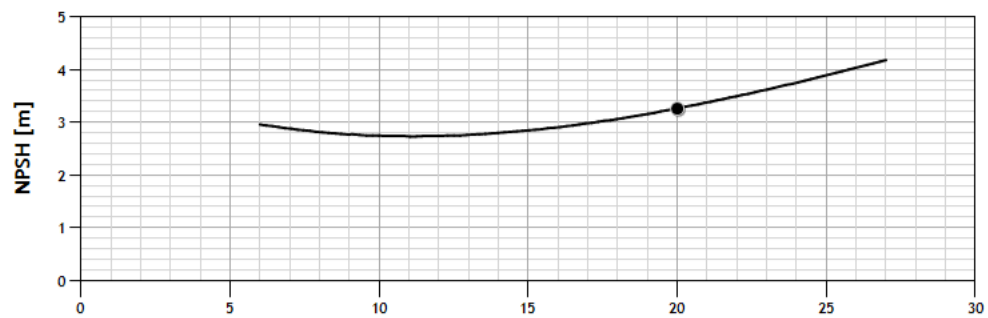
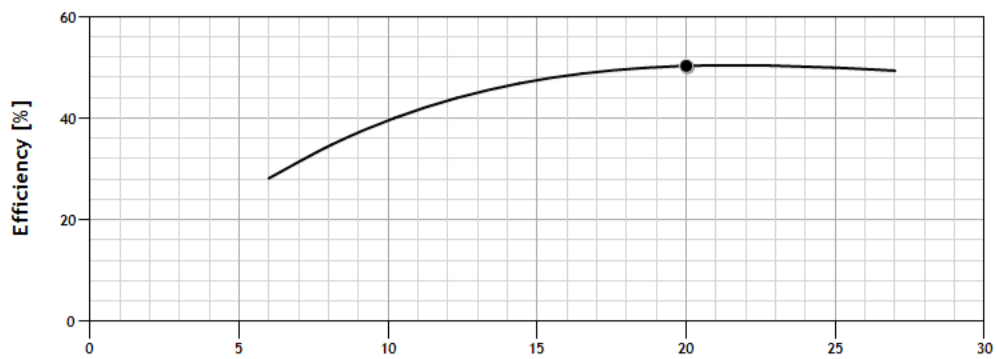
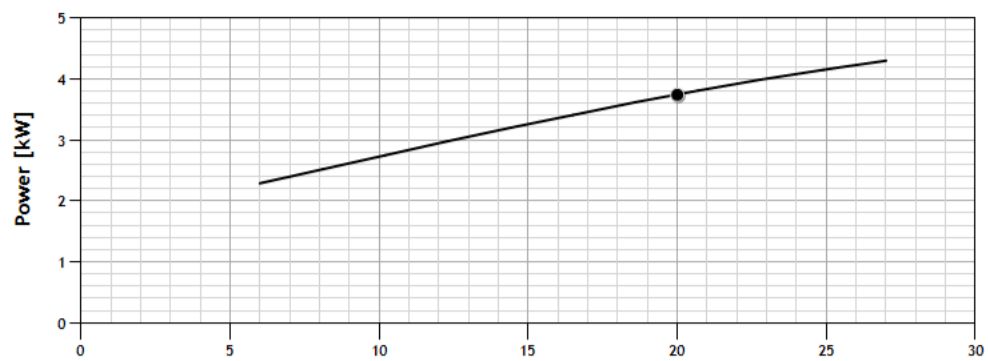
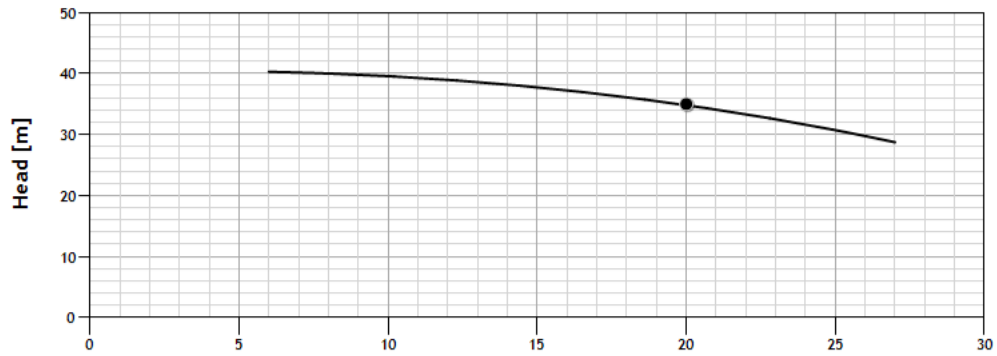
Curv n°:

CM32-200C

Date:

6/22/2022

Q (m³/h) 20 | H (m) 35 | Power [kW] 3.74 | Efficiency % 50.26 | NPSH (m) 3.26



Flow Rate [m³/h]

MEI \geq 0.4 (regulation EU N. 547/2012)
Tolerances according to UNI ISO 9906 grade 3B